

Department of  
Obstetrics &  
Gynecology

# 2020 Residency Prospectus



# A Message from the Chair



Welcome to Columbia University Department of Obstetrics and Gynecology! The Obstetrics and Gynecology residency program at Sloane Hospital for Women at NewYork-Presbyterian/Columbia University Irving Medical Center is an exciting,

fast-paced program which provides trainees with a wealth of clinical experience and exposure to all facets of our wide-ranging and rewarding specialty.

New York City has been at the center of the coronavirus pandemic in the United States, and everyone in the NYP/CUIMC has been affected by it, from our frontline healthcare workers to our students and neighbors. Our clinicians and researchers including our residents have shown incredible leadership during this difficult time, publishing leading-edge research about our pandemic response.

Our residency program is filled with bright, energetic physicians who are not only stellar clinicians, but are also extremely well-versed in the literature of our field. During the course of their training, our house officers gain experience in managing virtually all of the problems that could confront a practitioner in our discipline.

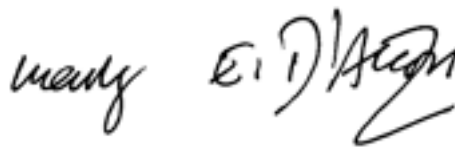
Our department is home to one of the largest and most respected faculties of any department in the nation. Within the Morgan Stanley Children's Hospital, we have facilities like the Center for Prenatal Pediatrics and the Mothers Center, along with a state-of-the-art Labor and Delivery Unit and Level III Neonatal Intensive Care Unit that is second to none.

We also have the privilege of being surrounded by extraordinarily talented colleagues in every specialty at the Vagelos College of Physicians and Surgeons and NewYork-Presbyterian Hospital, which allows us to offer world-class, comprehensive care to virtually any patient admitted to our service.

We care for a broad range of publicly and privately insured patients from around the world as well as those from the surrounding neighborhood of Washington Heights. We are located in one of the largest, most diverse cities in the world and serve a patient population that presents us with genetic, medical, and surgical challenges of incredible complexity on a daily basis. We proudly serve our community and enjoy training the next generation of leaders in the field.

Our program is a rigorous but rewarding endeavor, which culminates with the graduation of physicians who have superb clinical skills and the academic foundation to prepare them for any fellowship or practice opportunity.

We invite you to come and meet with us. We are proud of who we are and what we do, and we are always looking for more bright and talented people to join our team!



**Mary E. D'Alton, MD**

Chair, Department of Obstetrics & Gynecology  
Columbia University Irving Medical Center



## Fast Facts About Our Department

- Ranked #4 for Gynecology nationwide by *U.S. News and World Report*. NewYork-Presbyterian is ranked #1 in the State of New York and #5 in the nation by *U.S. News*
- Ranked #5 in *U.S. News and World Report* for women's health programs at top medical schools
- Received more than 800 applications for the Class of 2024 for six residency openings
- 26 resident publications in 2019-2020 academic year
- 16 Best Doctors in national and regional rankings
- 101 full-time faculty
- 69,288 unique patients served in FY2020
- 7,086 deliveries in FY2020
- Performed the first laser photocoagulation surgery to treat twin-to-twin transfusion syndrome in New York City
- 143 active funded research projects
- Ranked #7 in National Institutes of Health funding

## Residency Duration

The Obstetrics and Gynecology residency program is fully accredited by the Accreditation Council for Graduate Medical Education (ACGME) for six residents per year in the four-year program.

## Prerequisite Training and Selection Criteria

Our selection criteria are consistent with the ACGME General Requirements and Columbia University Irving Medical Center's Equal Employment Opportunity and Hiring Guidelines. Columbia University residency programs do not discriminate with regard to race, color, religion, national origin, handicap, veteran status, sexual orientation or preference, sex, or age.





## HISTORY

The Sloane Maternity Hospital opened in 1887 as New York City's first medical facility dedicated to women's health. It was established with a benefaction from William D. Sloane and his wife, Emily Thorn Sloane, the granddaughter of Cornelius Vanderbilt. The goal was to endow a modern institution to treat women and educate midwives and obstetricians. In 1928, the Sloane Hospital for Women moved to its present site and became the obstetric and gynecologic service for Columbia-Presbyterian. Today, The Sloane Hospital for Women continues to lead the way in advancing women's health, and is now one of the preeminent obstetric and gynecologic programs in the world.



## OUR MISSION

As major institutions of higher learning, NewYork-Presbyterian Hospital and Columbia University Vagelos College of Physicians and Surgeons are deeply committed to residency training. Education is an integral part of the tripartite mission of the Department of Obstetrics and Gynecology, along with patient care and research. As a world leader in women's health care, our goal is to provide the finest comprehensive training for our future practitioners in our specialty by using the latest knowledge and innovative research to provide the community at large the highest quality patient care.

Our program benefits from being affiliated with both an Ivy League institution and a world renowned hospital. All of our clinical services are based at NewYork-Presbyterian Hospital, one of the most comprehensive university hospitals in the world, with leading specialists in every field of medicine. With our dedicated staff, modern facilities, state-of-the-art technology, commitment to quality care, and our role in educating future physicians, NewYork-Presbyterian/Columbia University Irving Medical Center has earned a reputation as a world class teaching hospital.

House officers hold academic appointments as Postdoctoral Residency Fellows of Columbia University Vagelos College of Physicians & Surgeons. As an important part of their learning experience, residents are expected to teach, supervise, and evaluate medical students on all services.



## RESIDENCY PROGRAM LEADERSHIP



**Rini Banerjee Ratan, MD**

Program Director, Ob/Gyn Residency  
Vice Chair of Education  
Professor of Obstetrics &  
Gynecology at CUMC



**Richard L. Berkowitz, MD**

Associate Program Director,  
Ob/Gyn Residency  
Professor of Obstetrics &  
Gynecology at CUMC

## OB/GYN DIVISIONS AT COLUMBIA

### Family Planning and Preventative Services

Division Chief: **Carolyn Westhoff, MD**

Our specialists in Family Planning bring expertise in assisting women with chronic and complex health conditions to make informed choices about contraceptive options. Our faculty members are involved in the development of novel contraceptives and work to increase access to contraception and women's health services. The division also trains residents to perform minimally invasive surgery and conduct clinical research.

### General Obstetrics & Gynecology

Division Chief: **Katarina Eisinger, MD**

The Division of General Ob/Gyn offers patients comprehensive obstetric and gynecologic care, including a wide range of consultation and treatment options, from routine well-woman care to the most advanced diagnosis and treatment of obstetric and gynecologic problems for women of all ages. Our physicians deliver approximately 4,800 babies each year.

### Gynecologic Oncology

Division Chief: **Jason Wright, MD**

The Division of Gynecologic Oncology participates in nationally-recognized, interdisciplinary programs supported by the Herbert Irving Comprehensive Cancer Center to advance research and training and discover the best approaches for cancer prevention, diagnosis, and treatment. Research includes ovarian cancer, chemotherapy resistance, clinical trials for all types of gynecologic cancer, and investigating the development of cervical dysplasia.

### Gynecologic Specialty Surgery

Division Chief: **Arnold P. Advincula, MD**

Our Division of Gynecologic Specialty Surgery offers comprehensive gynecologic surgical care for women of all ages. Our surgeons are leader in minimally invasive gynecologic surgery and employ the latest technologies to treat various female reproductive tract disorders. They strive to take the least invasive approach to surgery whenever possible, regularly using laparoscopic and robotic techniques to minimize patients' recovery times.

### Maternal-Fetal Medicine

Division Chief: **Lynn Simpson, MD**

Columbia's Maternal-Fetal Medicine specialists are leaders in caring for expectant mothers with high-risk health conditions, fetal abnormalities, or obstetric complications. The division contains multiple centers dedicated to high-risk obstetrics, including the Center for Prenatal Pediatrics, the Mothers Center, and the Preterm Birth Prevention Center. Faculty train residents to manage high-risk pregnancies within a supervised environment.

### Reproductive Endocrinology and Infertility

Division Chief: **Zev Williams, MD, PhD**

The Division of Reproductive Endocrinology & Infertility at Columbia sees patients in a brand-new fertility center with a state-of-the-art IVF laboratory. Led by international pioneers in reproductive medicine, our fertility team focuses both on cutting-edge innovation and patient experience. Our physicians have successfully treated many patients who have struggled for years with issues related to infertility and recurrent pregnancy loss.

## APPLICATION, INTERVIEW, AND BENEFITS

We will be accepting applications via the Electronic Residency Application Service (ERAS) through November 1, 2020. All applications MUST be complete for an applicant to be considered for our program. This includes the following:

- A completed AAMC-NRMP application for residency
- An official copy of your USMLE scores
- An official medical school transcript
- A minimum of three recommendations from faculty members familiar with your performance
- Dean's Letter

A carefully selected pool of applicants will be offered interviews on campus. Invitations to interview will be sent in mid-November and interviews will be held on the following dates:

- Thursday, November 19, 2020
- Thursday, December 3, 2020
- Thursday, December 10, 2020
- Thursday, December 17, 2020

### Sample Interview Day

The following general schedule will apply for both the morning and afternoon interview sessions:

- Meet the program directors
- Morbidity and Mortality and Grand Rounds
- Program introduction
- Faculty interview 1
- Faculty interview 2
- Resident interview
- Program director interview
- Virtual Tour

### Salary and Benefits

Salary stipend for the 2020-2021 academic year is as follows:

Resident Level	Salary
PGY-1	\$73,489
PGY-2	\$79,359
PGY-3	\$85,864
PGY-4	\$88,277
PGY-5	\$91,276
PGY-6	\$92,915
PGY-7	\$95,713

A meal card is provided for on-call meal expenses.

### Diversity, Inclusion, and Belonging

We recognize the vital need for diversity and inclusion at all levels of our organization. In order to continue and expand upon our tradition of excellence in clinical care, research, and education, it is essential that our faculty, fellows, and residents represent a range of perspectives, backgrounds, and life experiences, and reflect the diversity of patients we serve. We recognize that working toward inclusivity and against inequality, inequity, and implicit bias is an ongoing process, and we are committed to engaging fully in it. To learn more, visit [columbiaobgyn.org/diversity](https://columbiaobgyn.org/diversity).

### Vacation

Residents receive four weeks of vacation each year, which are generally taken one week at a time.

### Educational Benefits

Each resident is sponsored to attend at least one national conference during the course of their training, and are also provided an education stipend.

### Medical Benefits

Residents participate in NewYork-Presbyterian Hospital's Flexibility Benefits Program, which allows residents to choose from a variety of benefit plans covering healthcare, dental care, life insurance, and disability protection. Professional liability coverage is provided by the hospital.

## MEET OUR RESIDENTS

### PGY-1



Margaret  
Bogardus MD



Helen  
Daifotis, MD



Alexandra  
Diggs, MD



Jordan  
Emont, MD



Amalia  
Gonzalez, MD



Natalia  
Parra, MD

### PGY-2



Brittany  
Arditi, MD



Ryan  
Boone, MD



Laura  
Gemmell, MD



Austin  
Oberlin, MD



Melanie  
Polin, MD



Anna  
Staniczenko, MD

### PGY-3



Clara Bertozzi-  
Villa, MD



Anne  
Knisely, MD



Nicole  
Krenitsky, MD



Elizabeth  
Ludwig, MD

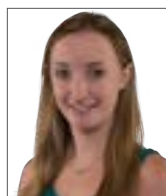


Vanessa  
Nieto, MD



Alexis  
Panzer, MD

### PGY-4



Nigel  
Madden, MD



Aaron  
Praiss, MD



Tiffany  
Sia, MD



Emily  
Spurlin, MD



Conrad Stern-  
Ascher, MD



Sbaa  
Syeda, MD

## CLINICAL CURRICULUM

### First Year Clinical Rotations

The rotational assignments in the PGY-1 are designed to develop a strong foundation in the fundamental concepts of obstetrics and gynecology. Residents receive training in basic ultrasound techniques by spending time in our state-of-the-art obstetrics and gynecology ultrasound units during the REI/Ultrasound block. A rotation in primary and preventive ambulatory care provides residents with a firm clinical base on which to build their skills in patient care.

- Obstetrics
- Benign Gynecology
- Gynecologic Oncology
- Family Planning
- REI/Ultrasound
- Primary and Preventive Ambulatory Care
- NewYork-Presbyterian Allen Hospital
- Night float

### Second Year Clinical Rotations

Residents in the PGY-2 are given increased clinical responsibilities and exercise a greater role in the management of patients on all services. Residents are able to solidify their understanding of the basic concepts in obstetrics and gynecology and participate in more advanced procedures.

- Obstetrics
- Benign Gynecology
- Gynecologic Oncology
- Family Planning
- REI/Ultrasound
- Maternal Fetal Medicine
- Night float

### Third Year Clinical Rotations

PGY-3 affords residents the opportunity to concentrate on their mastery of surgical skills and the development of comprehensive management practices. Residents learn to serve as consultants to other specialties on the Ob/Gyn consult and clinic rotation and work closely with MFM fellows and faculty in the care of antepartum patients with complex obstetrical problems. PGY-3 residents have an elective rotation, which they may use to pursue specialized clinical training or research, either in-house or at an outside institution.

- Minimally Invasive Gynecologic Surgery
- Obstetrics
- Benign Gynecology
- Maternal Fetal Medicine
- Ob/Gyn Consult and Clinic
- REI/Ultrasound
- Urogynecology/Pediatric and Adolescent Gynecology
- Elective
- Night float

### Fourth Year Clinical Rotations

During the PGY-4, chief residents assume the responsibility of managing each service as they prepare to become independent practitioners. An integral part of their role is to supervise and teach junior residents and medical students. Chiefs also continue to expand their surgical repertoire as they complete advanced training in the gynecologic subspecialties, including oncology, reproductive endocrinology and infertility, urogynecology, and reconstructive pelvic surgery.

- Minimally Invasive Gynecologic Surgery
- Obstetrics
- Benign Gynecology
- Gynecologic Oncology
- REI/Ultrasound
- Urogynecology/Pediatric and Adolescent Gynecology
- Elective
- Night float



## CONFERENCES AND DIDACTIC TEACHING

Thursday is our academic day in the Department of Obstetrics and Gynecology. The day begins with Morbidity and Mortality (M&M) conference, in which cases from each service are presented by members of the house staff and are followed by lively and thoughtful discussion from the faculty and other members of the department.

### Grand Rounds

Weekly Grand Rounds follow the M&M conference and feature presentations from within our faculty, as well as many distinguished visiting guest speakers. Each second and fourth year resident is required to give one Grand Rounds presentation each year. These talks are often the highlight of the morning session.



### Resident Didactic Lecture Series

The Resident Didactic Lecture Series supplements the experience gained on clinical rotations to round out the comprehensive post-graduate curriculum. Residents have protected time away from their clinical duties to attend this weekly lecture series following Grand Rounds. One Thursday of the month is a designated simulation session in the Simulation Center at the Vagelos Education Center.

### Fetal Heart Rate Tracing Rounds

Fetal Heart Rate Tracing Rounds are conducted once a week on Labor & Delivery.

### Gynecology Conference

A Gynecologic (TGIF) Conference takes place every Friday morning. Preoperative cases are discussed with supervising faculty, and often an ACOG practice bulletin or a review of the recent literature on a particular gynecologic topic will be presented by a resident.

### Prenatal Pediatrics Conference

A Prenatal Pediatrics Conference is held weekly. Complex high-risk pregnancies involving issues such as fetal anomalies, congenital heart defects, and genetic syndromes are discussed in a multidisciplinary setting with colleagues from Neonatology, Pediatric Surgery, Anesthesia, and other relevant specialties.



### Obstetrics Journal Club

An OB Journal Club is held every month with the presentation of an interesting paper by a member of the house staff and a critical discussion and review of the topic led by an MFM fellow or faculty member.

### Continuity Clinics

Ambulatory Continuity Clinics provide residents with the ability to care for their own panel of patients in a longitudinal fashion throughout their entire residency. Starting in the first year, residents are assigned one half-day session each week to develop their own "practice" of patients. Residents are supervised by attending physicians and learn how to provide comprehensive health care for women throughout their lives, including preventive medicine, family planning, and antenatal, postpartum, gynecologic, and geriatric care.



## RESEARCH CURRICULUM

The research curriculum offers residents a conducive and supportive environment for scientific investigation, education, and scholarship under the supervision of a chosen mentor and training from our investigators. Residents are required to actively participate in at least one research project during residency training, becoming familiar with the development, execution, data analysis, interpretation, and presentation of a research project.

### PGY-1

- Didactic lecture: "Introduction to Research at Columbia"
- Intro to Research: Residents must complete basic institutional on-line research training courses by the end of PGY-1 or sooner if active engagement of research is performed prior to this time.
- Attendance at monthly Journal Club sessions

### PGY-2

- Didactic curriculum: Lecture series "Principles and Concepts in Epidemiology and Biostatistics"
- Mentor identification: Each resident year is assigned a mentor to ensure that residents are on track with the research curriculum. Your mentor will follow your research progress throughout your residency.
- Presentation of research hypothesis formally to Core Group
- Attendance at monthly Journal Club sessions

### PGY-3

- Research: Collect data, analyze results, and meet with mentor to assess progress.
- Development of proposal (protocol) to solve the research question (conduct an appropriate literature search based on the research question; identify, consult, and collaborate with the appropriate content experts to conduct research; and propose a methodological approach to solve the question)
- Presentation: Present results of the research at the annual Sloane Academic Assembly at completion of PGY-3.
- Attendance at monthly Journal Club sessions

### PGY-4

- Presentation: Meet with mentor regularly to assess progress. Present findings at national conferences (e.g. ACOG, SMFM).
- Publication: Meet with mentor to assess progress. Write up and submit to a peer-reviewed journal by completion of PGY-4
- Attendance at monthly Journal Club sessions

## RESIDENT RESEARCH

The Department of Obstetrics and Gynecology is committed to providing a clinical, basic science, and technology-based research environment in women's health.

Specifically, our residents are required to be familiar with the development, execution, data analysis, interpretation, and presentation of a research project by active participation in at least one research project during residency training, to understand the basic principles of basic and applied clinical research, and to be able to critically appraise and summarize the literature on a given subject and judge whether a research project or publication is sound, ethical, unbiased, and clinically valuable.

### Recent Published Resident Research

#### Aaron Praiss

***A modern assessment of the surgical pathologic spread and nodal dissemination of endometrial cancer.*** Aaron M. Praiss, Yongmei Huang, Caryn M. St Clair, Ana I. Tergas, Alexander Melamed, Fady Khoury-Collado, June Y. Hou, Chin Hur, Cande V. Ananth, Alfred I. Neugut, Dawn L. Hershman, Jason D. Wright

***Safety of same-day discharge for minimally invasive hysterectomy for endometrial cancer.*** Aaron M. Praiss, Ling Chen, Caryn M. St Clair, Ana I. Tergas, Fady Khoury-Collado, June Y. Hou, Cande V. Ananth, Alfred I. Neugut, Dawn L. Hershman, Jason D. Wright

#### Sbaa Syeda

***Receipt of Proton-Pump Inhibitors during Pregnancy and Risk for Preeclampsia.*** Natalie A. Bello, Yongmei Huang, Sbaa K. Syeda, Jason D. Wright, Mary E. D'Alton, Alexander M. Friedman

***Chemotherapy, Radiation, or Combination Therapy for Stage III Uterine Cancer.*** Sbaa K. Syeda, Ling Chen, June Y. Hou, Ana I. Tergas, Fady Khoury-Collado, Alexander Melamed, Caryn M. St Clair, Cande V. Ananth, Alfred I. Neugut, Dawn L. Hershman, Jason D. Wright

### Sloane Academic Assembly Research

#### Publications

- ***Telehealth Uptake into Prenatal Care and Provider Attitudes during Covid-19 Pandemic in New York City: A Quantitative and Qualitative Analysis***  
**Presenter:** Nigel Madden MD  
**Preceptors:** Cynthia Gyamfi-Bannerman M.D., Alexander Friedman MD
- ***Using Machine Learning to Create Prognostic Systems for Endometrial Cancer***  
**Presenter:** Aaron Praiss, MD  
**Preceptor:** Jason Wright, MD
- ***Trends in Use and Effect on Survival of Simple Hysterectomy for Early-Stage Cervical Cancer***  
**Presenter:** Tiffany Sia, MD  
**Preceptor:** Jason Wright, MD
- ***Barriers to Timely Surgical Management and Risk of Oophorectomy for Ovarian Torsion in a National Sample***  
**Presenter:** Emily Spurlin, MD  
**Preceptor:** Eric Forman, MD
- ***Shared Decision Making: OB/GYN Resident Teaching Model for Second Trimester Abortions***  
**Presenter:** Conrad Stern-Ascher, MD  
**Preceptors:** Rini Ratan, MD, Jennifer Kerns, MD
- ***To Determine 9-Month Risk for Cardiac Readmissions Among Women Without Cardiac Diagnoses Present during Delivery Hospitalizations***  
**Presenter:** Sbaa Syeda, MD  
**Preceptors:** Cynthia Gyamfi-Bannerman MD, Alexander Friedman MD

## RESIDENT LIFE

### Living in New York

Columbia University Irving Medical Center is located in Washington Heights, a family-oriented neighborhood in northern Manhattan, a diverse and family-oriented neighborhood that is steeped in history. The hospital is easily accessible by several subway lines and is half a mile from the George Washington Bridge. New Jersey suburban communities, as well as Westchester and Riverdale in New York are within 15 to 30 minutes away.



### Duty Hours

It is our policy to comply with New York State 405 Regulations and with ACGME policy on work hours for post-graduate trainees. A duty hour work week is defined as a maximum of 80 hours averaged over four weeks, inclusive of all in-house activities and clinical assignments.

### Monthly Resident Well-Being Sessions

The PGY-3 Medical Education Council focuses on different aspects of the resident curriculum. One of our residents on the committee focuses on resident well-being. We have implemented new well-being sessions for our residents in the past year, including a "Broadway Bodies" dance class and a painting session. Over the holidays, we also dedicated a well-being session to performing a charitable



act, making baby blankets for Project Linus, which provides them to nurseries in children's hospitals across the area.

### Annual Resident Retreat

One of the most anticipated days of the residency program is our annual Resident Retreat. The morning starts off with an in-depth exploration of an education topic. Our past topics include: Breaking Bad News, The Business of Medicine, Residents-as-Teachers, and the United States Health Care System. The afternoon is devoted to a fun, interactive team-building activity. Our past activities include a scavenger hunt at the Metropolitan Museum of Art, a culinary challenge, games at Chelsea Piers, and a scavenger hunt at Grand Central Station.

### Sloane Olympics

The Sloane Olympics are a residency-wide, end-of-year OSAT/OSCE to assess performance. Residents rotate through individual stations that are led by faculty members. The stations cover a range of topics in obstetrics and gynecology, incorporate the use of high and low fidelity simulators and standardized patients, and are aligned with the PGY-specific educational objectives for all rotations.







### Global Health Elective

We have joined forces with the Baylor College of Medicine Global Women's Health Program. The program is based at Kamuzu Central Hospital, a 619-bed hospital in Lilongwe, Malawi that serves as the regional referral center for central Malawi. This elective rotation in global women's health provides residents the opportunity to share knowledge and experiences with physicians working under the constraints of



low resource settings and to treat women with conditions not commonly seen in the U.S. The experience is meant to foster global exchange, build capacity and enrich the educational experience. Residents work under the direction of a full-time U.S.-trained board-certified faculty

member. All visiting U.S. residents live at Baylor House, a safe living environment that is home to both short- and long-term students, residents, faculty members and researchers.

### Artful OBservation

We have launched a new educational initiative in the department called Artful OBservation. Artful OBservation is designed to celebrate the unique artistic excellence in visual arts, music, narrative medicine, and theater that is all around us in New York City. Medical Humanities, which provides the inspiration for Artful OBservation, is defined by the National Library of Medicine as the "intersection of medicine and humanistic disciplines such as philosophy, religion, literature, and the fine and performing arts." We believe the arts provide an opportunity for physicians to engage in shared experiences, with the potential to increase wellbeing and decrease burnout among the larger community. We have improved physician well-being and community building within our own department through the Artful OBservation initiative. In 2019, residents enjoyed these activities:

- A Night at the Theater: To Kill a Mockingbird
- Once on this Island: Ellis Island Immigrant Hospital
- A Night at the Museum: The Guggenheim



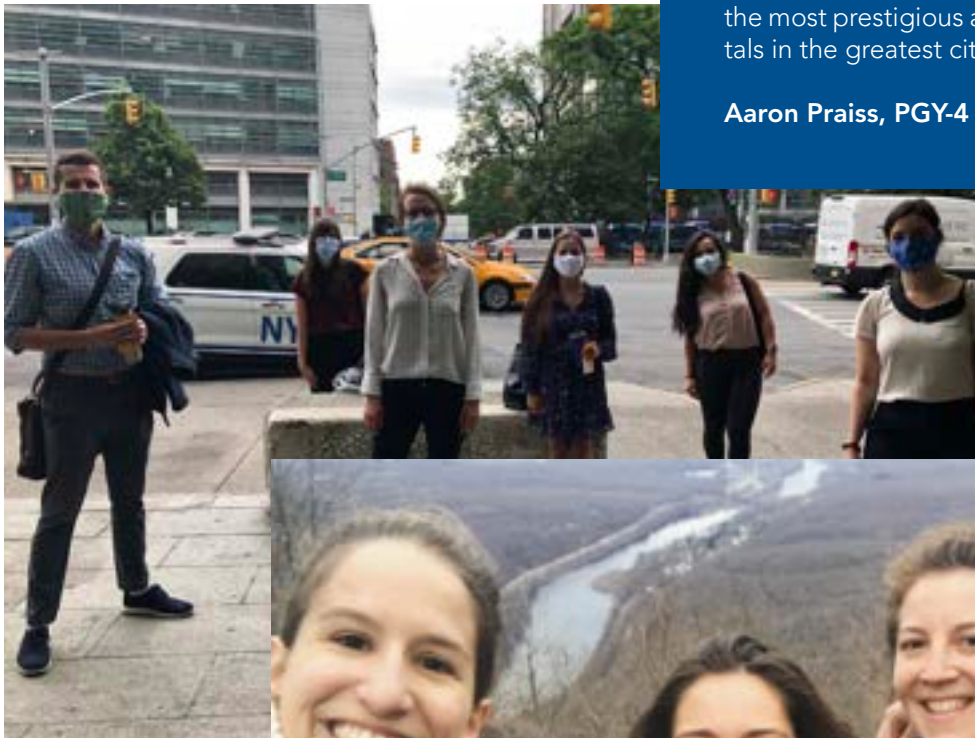
## WHY CHOOSE COLUMBIA?

Selecting your residency program is one of the most important decisions in your career in medicine. During your residency you'll work side-by-side with 23 other bright, energetic physicians who are not only stellar clinicians but also extremely well-versed in the current literature of our field.

**Why choose Columbia?** We asked our current and former residents to share their stories.

I ranked Columbia number one because, on my interview day, I instantly connected with the residents, fellows and faculty members. I was drawn to their profound ambition and dedication to their work, but also the sense of community and family they've created in the department (they're also fun people!). Now, as a resident, I'm so grateful for the outstanding hands-on clinical education I am receiving at one of the most prestigious and innovative hospitals in the greatest city in the world.

**Aaron Praiss, PGY-4**



I chose Columbia because the training is unbeatably rich, the faculty are inspiring and supportive and the patient population encompasses people from all socioeconomic backgrounds being treated side by side equally.

**Ben Margolis, Alumnus**



## LIFE AFTER RESIDENCY

### 2020

- MFM, Columbia University
- MIGS, Columbia University
- REI, Duke University
- Academic Generalist, Kaiser Permanente, Sacramento
- REI, University of Pittsburgh
- MFM, UCSF

### 2019

- MFM, Columbia University
- Gyn Onc, Brigham and Women's Hospital
- Academic Generalist, Northwell Health
- Gyn Onc, Albert Einstein
- MFM, University of Pennsylvania
- Academic Generalist, New York University



All top programs, including Columbia, have strong clinical training, but nowhere along the interview trail did I encounter residents who were so supportive of and so happy to be around each other. In addition, the program director, Dr. Ratan, is amazing and truly cares about the well-being of every resident. To me, these are the perfect ingredients for a successful and enjoyable residency experience.

**Anne Knisely, PGY-3**

### 2018

- Gyn Onc, New York University
- MFM, Columbia University
- Urogyn, Emory University
- Academic Generalist, Columbia University
- MFM, Albert Einstein
- Sabbatical, Israel

It was apparent early on what a special residency program Columbia has. The diversity of resident interests, and the successful application of those interests to research and clinical work, made it clear that it is a place with both the resources and faculty/department investment to support residents' career objectives- whatever they may be. The diversity and volume of patients that comes with working in a city like New York and a community like Washington Heights felt unique. It was clear the program cared about the community they worked with. The overwhelmingly kind welcome I received on matching left not a doubt that I had gotten very lucky to be taking my next step in medical training at Columbia.

**Elizabeth Ludwig, PGY-3**



Department of Obstetrics and Gynecology  
Columbia University Irving Medical Center  
622 West 168th Street, PH 16  
New York, NY 10032

[columbiaobgyn.org](http://columbiaobgyn.org)

COLUMBIA UNIVERSITY DEPARTMENT OF OBSTETRICS AND GYNECOLOGY